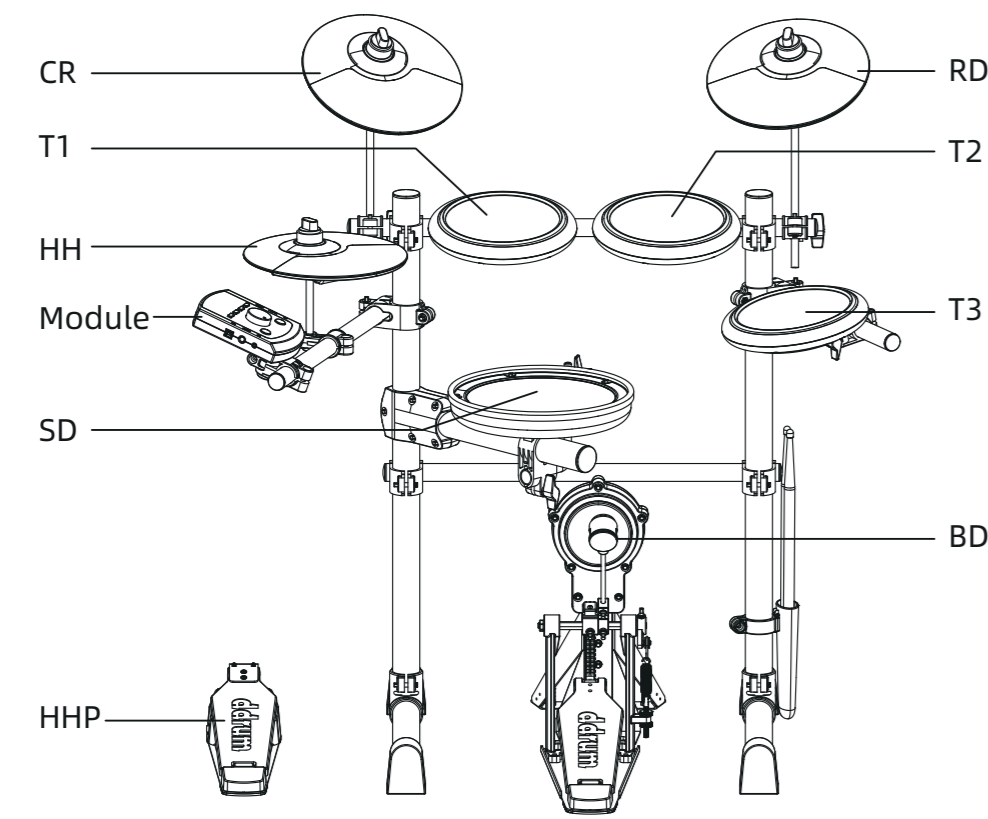


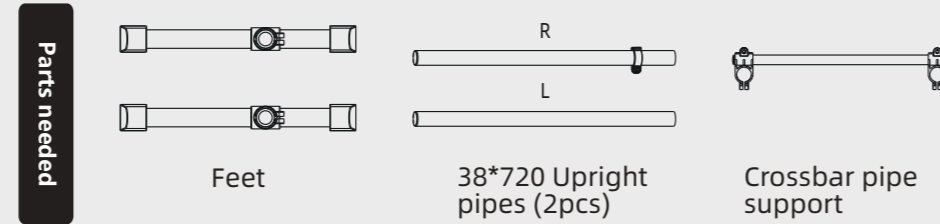
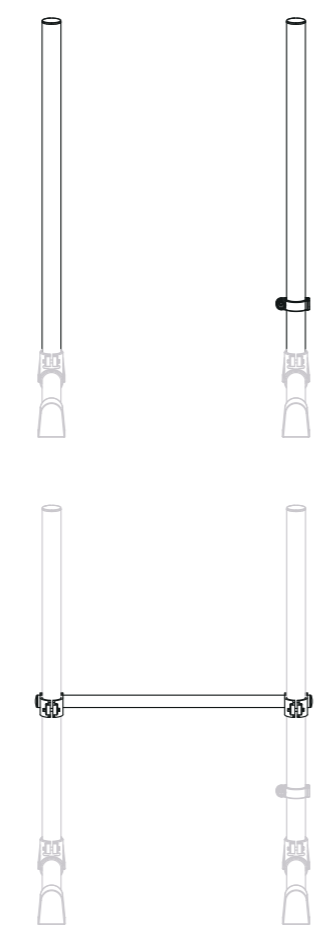
743*420mm
157g双铜

ddrum®

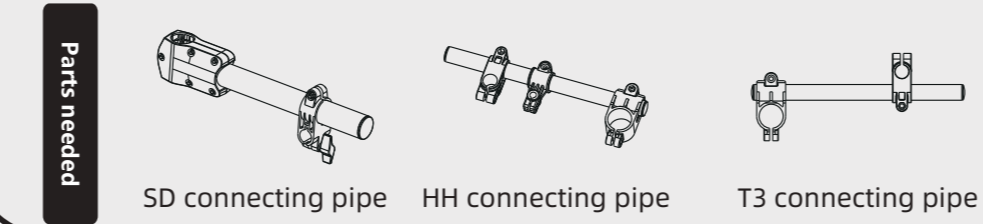
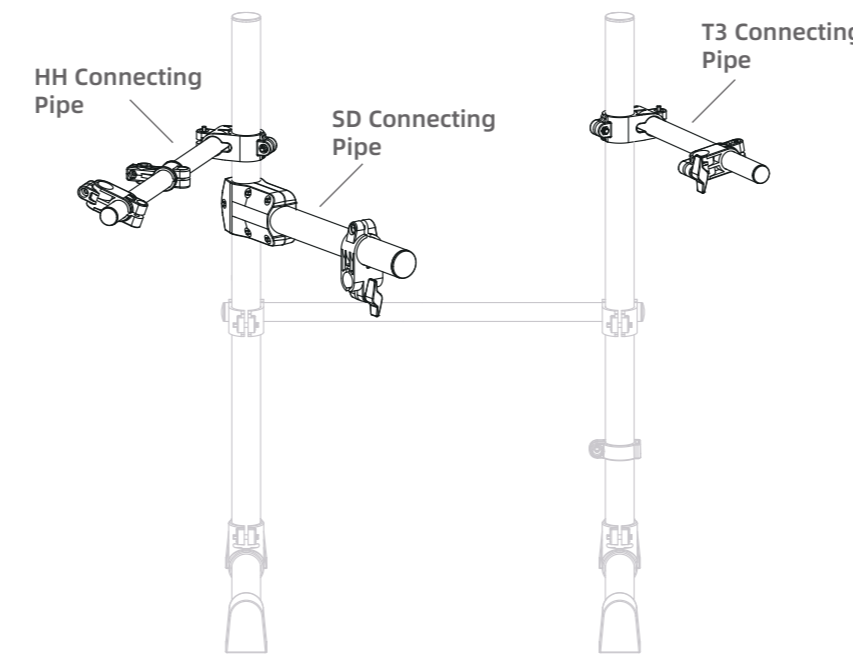
DD EFLEX BT8 Electronic Drum set Assembly Instructions



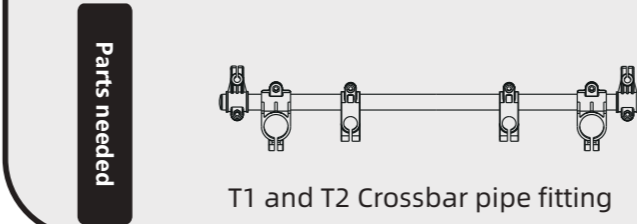
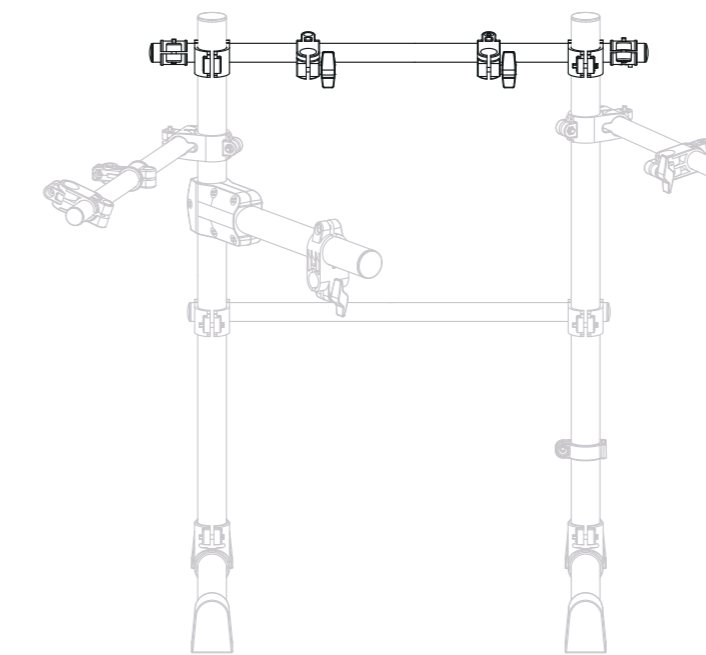
1 Base, Feet and Crossbar Support Assembly



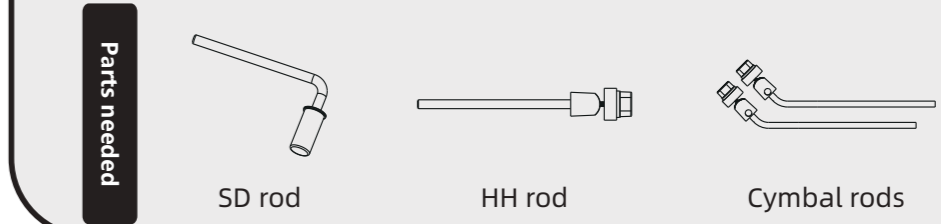
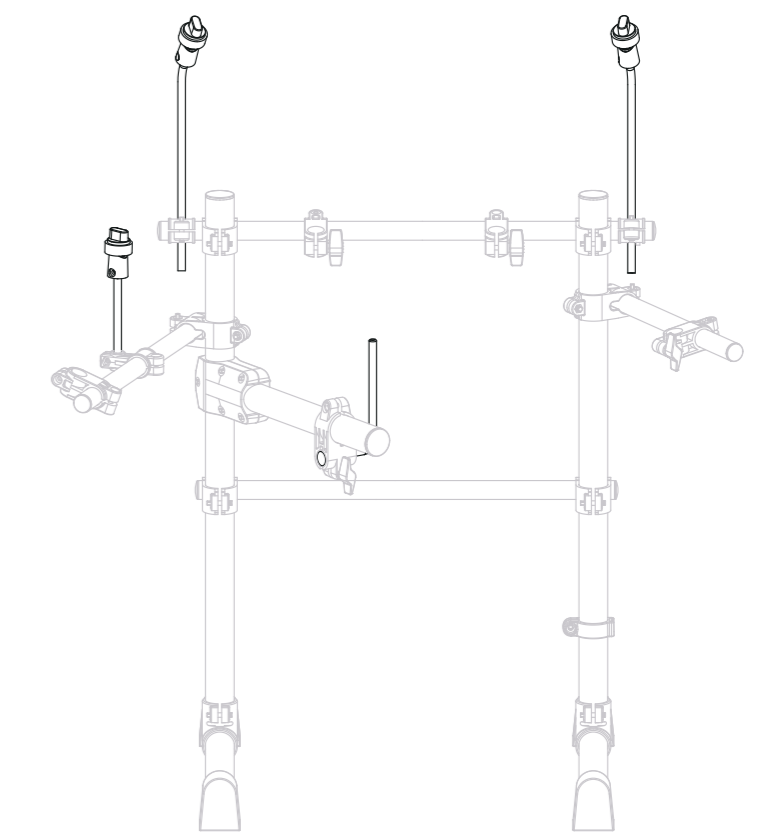
2 SD Connecting Pipe, HH Connecting Pipe, T3 Connecting Pipe Assembly



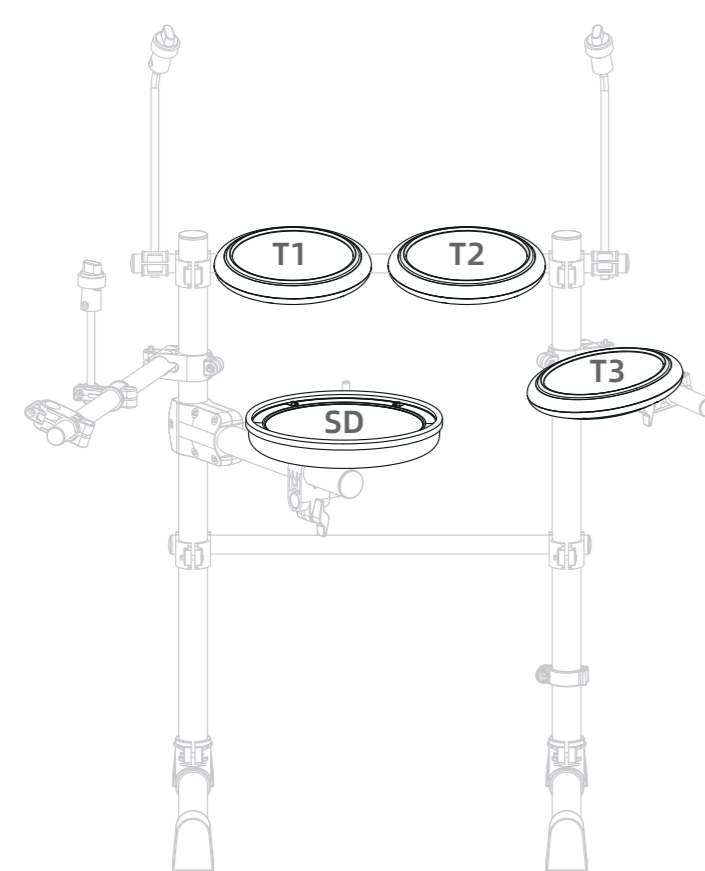
3 T1 and T2 Crossbar Pipe Fitting Assembly



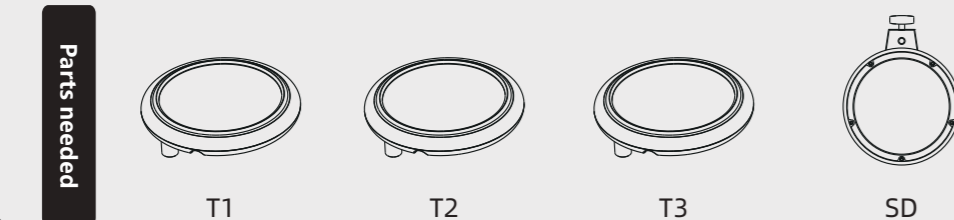
4 HH Rod, Cymbal Rods Assembly



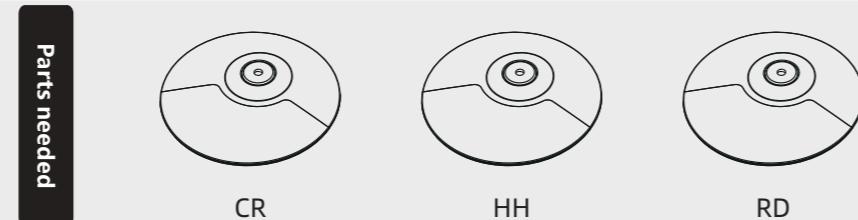
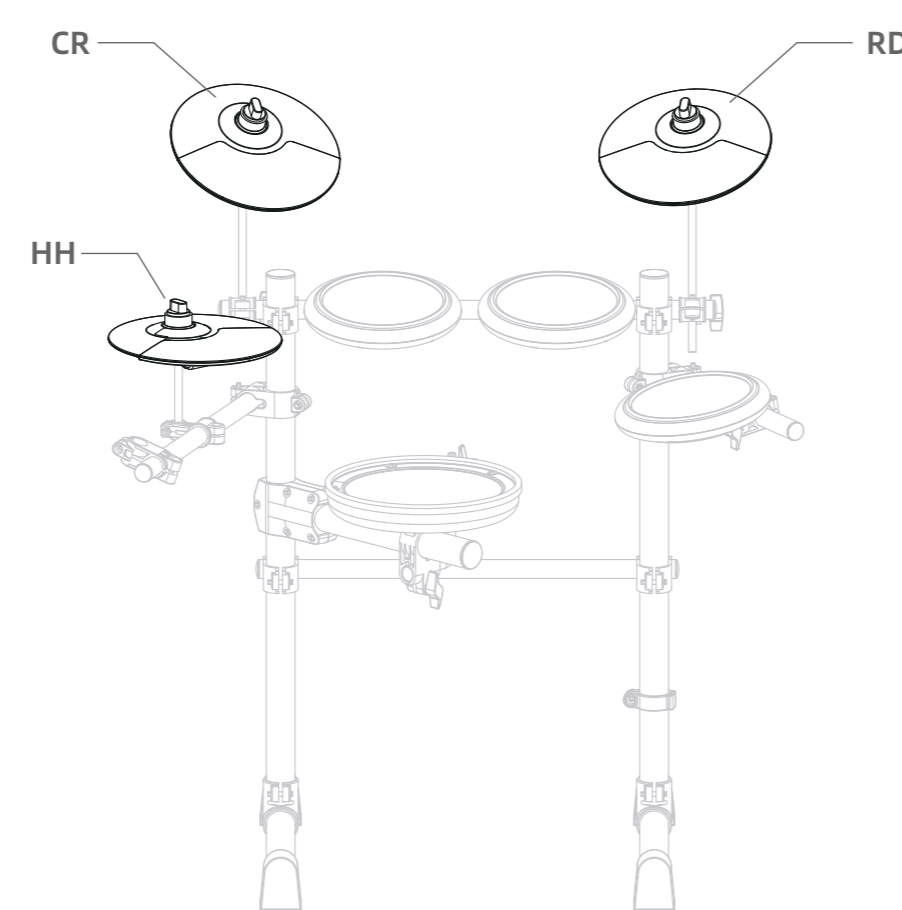
5 T1,T2,T3,SD Assembly



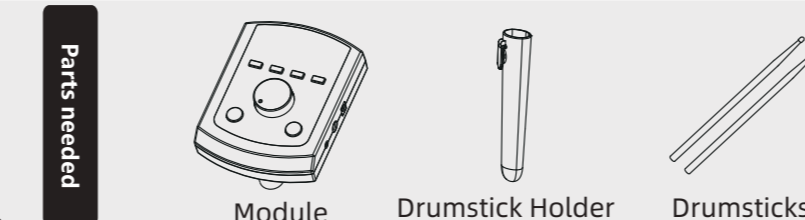
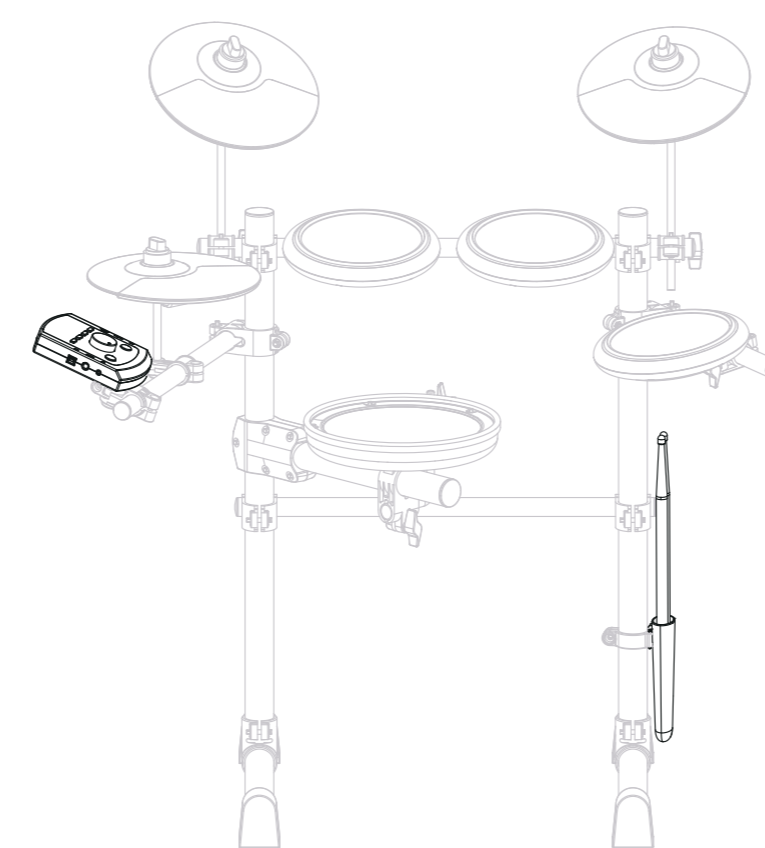
Please check the label at the bottom of the drum pad.



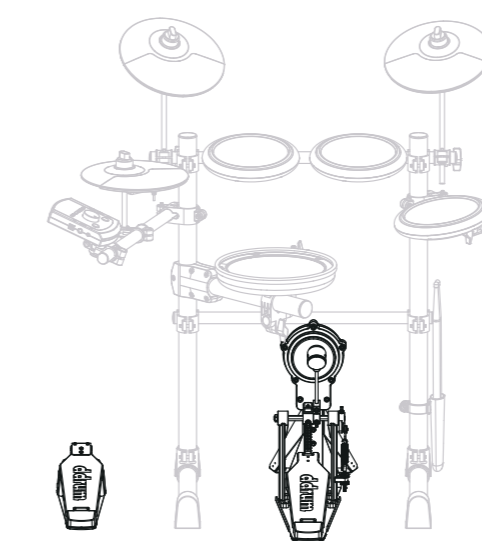
6 CR,RD,HH Assembly



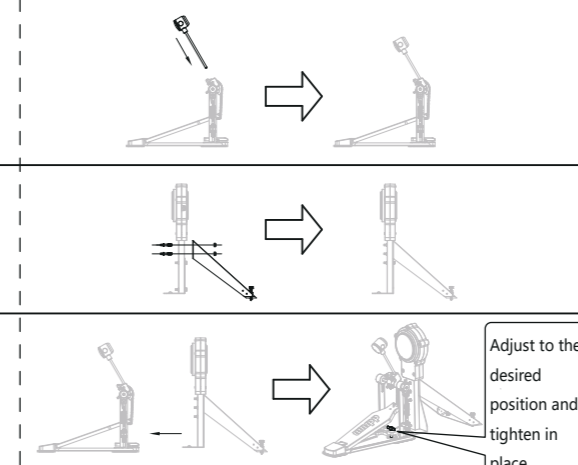
7 Module and Drumstick Holder Assembly.



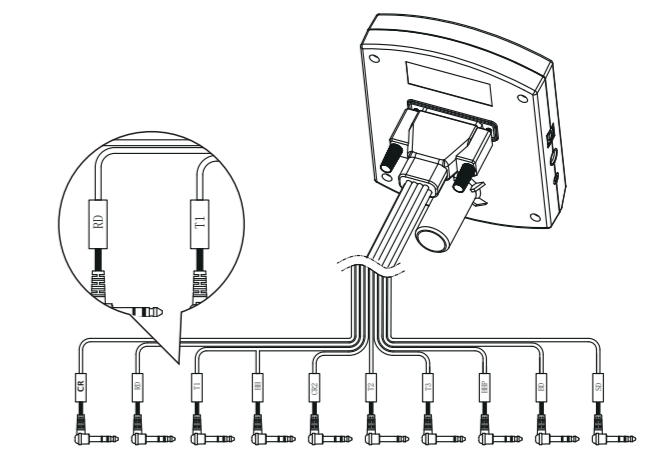
8 BD and HHP Assembly



1. Assemble the bass drum beater.
2. Assemble the bass drum pad.
3. Connect the bass pedal to the bass drum pad.



9 Cable Connections



1. Connect the cable to the module first and tighten the two screws into place like shown in the diagram above.
2. Pay attention to the letters show on each cable. These are to be matched with the letters on each drum pad.
3. For the easiest way to connect all the pads, please see below.
4. The EFLEX BT series module has an additional input for a crash cymbal. (Sold separately)

10 Cable Management

